

Uber PNL123

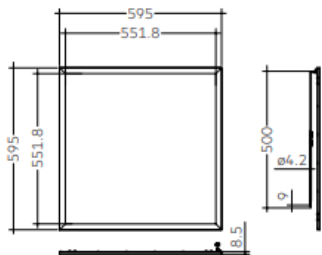


ELA 600x600mm 3800lm ADV2

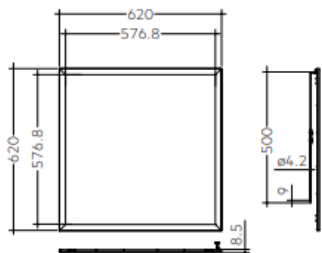


ELA 1200x300mm 3800lm ADV2

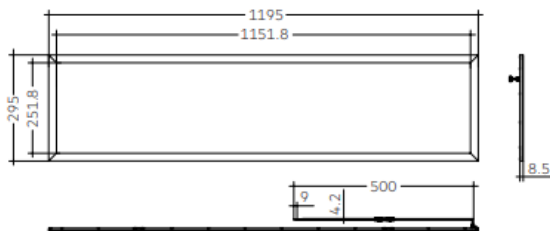
Please see the attached pages for detailed specifications.



ELA 600x600mm 3800lm ADV2



ELA 625x625mm 3800lm ADV2



ELA 1200x300mm 3800lm ADV2

| | |
|--------------------------------------|--|
| Mounting: | Recessed, surface or suspended |
| Body material: | Aluminium |
| Colour: | White (RAL9003) |
| LED module: | Tridonic |
| Colour temperature: | 3000k, 4000k, 6500k |
| Colour Rendering Index (CRI): | CRI 80> |
| Driver: | Tridonic |
| Emergency unit: | No |
| Movement sensor: | Available on request |
| Daylight control sensor: | Available on request |
| Operating temperature range: | -20°c to +40°c |
| IP Class: | IP20 |
| Power: | N/A |
| Lighting direction: | Direct |
| Reflector type: | N/A |
| Light distribution: | Symmetric |
| Diffuser: | PS, diffuser material TPA article (fulfils the TPA requirements): PS |
| General data: | 5 Years standard warranty, possible extension with project registration Different lumen output or wattage available on request All other technical features such as : Luminaire Eicacy, LOR, Lumen maintenance L/B etc. available in our pricelist Wattage of products may vary due to constant LED eicacy improvements. Luminous lux & Luminaire Power tolerance +/- 10%. System power consumption (LED module & driver) depends on components used |